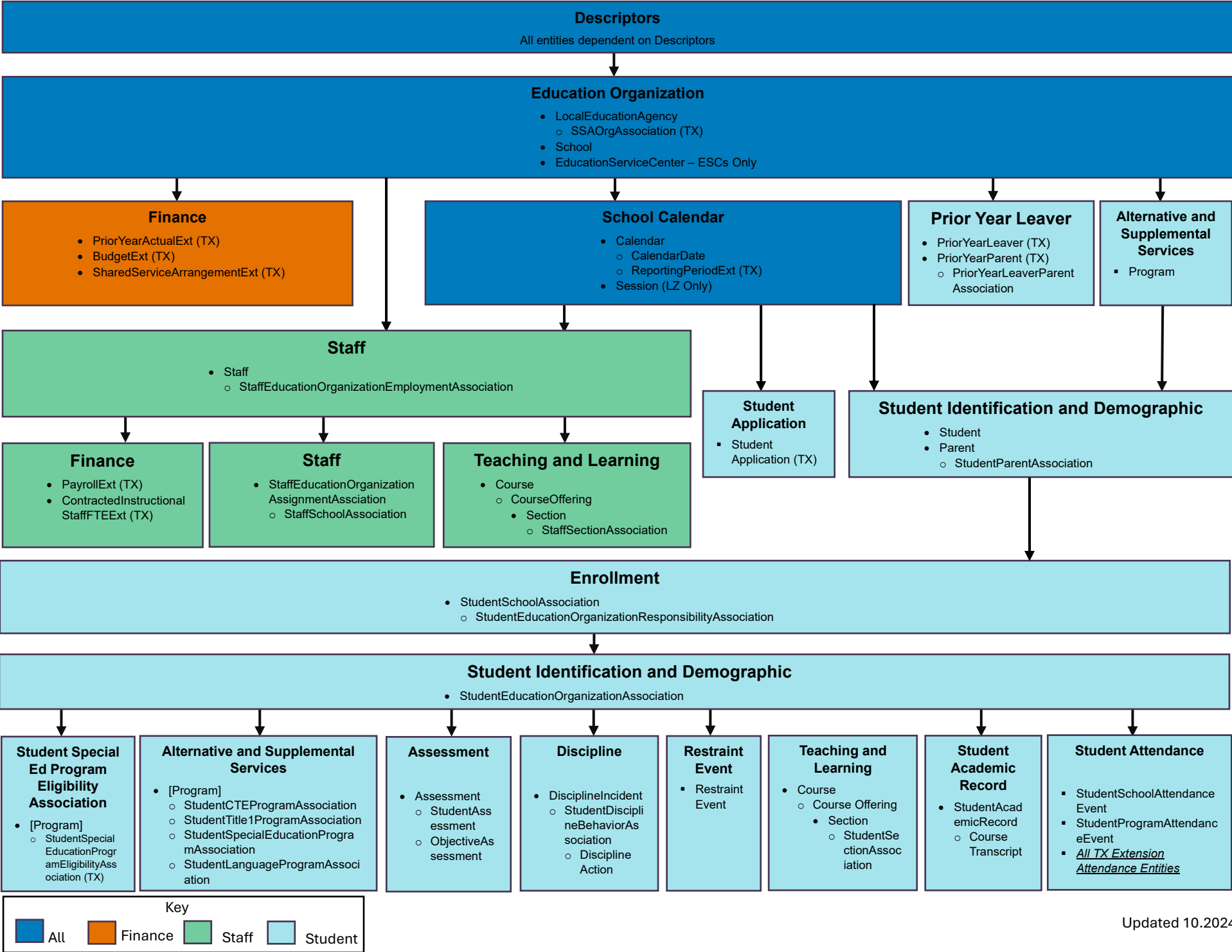


# TSDS DOMAIN DEPENDENCY (2025.2.1)



## TSDS Domain Dependency (TEDS 2025.2.1)



Domain Name	Entity (Resource) Name	Publishing Data Dependencies	Retrieving Data Dependencies
	<i>All entities (resources) are dependent on descriptors, most are also dependent on LocalEducationAgency and/or Schools.</i>	<i>Descriptor, LocalEducationAgency, and School are downloaded from TEA, so are not dependencies users will generally need to deal with. Districts may publish local descriptor values.</i>	<i>Resources in the IODS already have all necessary dependent resources within the IODS, so the GET itself does not have dependencies, though it may fail for other reasons. If the returned JSON is used for Posting to another IODS, then dependencies would apply according to POST rules.</i>
Education Organization Domain	LocalEducationAgency	No Dependencies	No Dependencies
Education Organization Domain	EducationServiceCenter	No Dependencies	No Dependencies
Education Organization Domain	SSAOrgAssociationExt (TX)	LocalEducationAgency	LocalEducationAgency
Education Organization Domain	School	No Dependencies	No Dependencies
School Calendar Domain	Calendar	School	School
School Calendar Domain	CalendarDate	Calendar, School	Calendar, School
School Calendar Domain	ReportingPeriodExt (TX)	Calendar, School	Calendar, School
School Calendar Domain	Session	School	School
Finance Domain	PriorYearActualExt(TX)	No Dependencies	No Dependencies
Finance Domain	BudgetExt(TX)	No Dependencies	No Dependencies
Finance Domain	SharedServiceArrangementExt(TX)	No Dependencies	No Dependencies
Alternative and Supplemental Services Domain	Program	LocalEducationAgency	LocalEducationAgency
Student Application	StudentApplication(TX)	No Dependencies	No Dependencies
Staff Domain	Staff	No Dependencies	No Dependencies
Staff Domain	StaffEducationOrganizationAssignment Association	Staff, LocalEducationAgency or School	Staff, LocalEducationAgency or School

# TSDS Domain Dependency (TEDS 2025.2.1)



Domain Name	Entity (Resource) Name	Publishing Data Dependencies	Retrieving Data Dependencies
Staff Domain	StaffSchoolAssociation	Staff, StaffEducationOrganizationEmploymentAssociation OR StaffEducationOrganizationAssignmentAssociation, School	Staff, StaffEducationOrganizationEmploymentAssociation OR StaffEducationOrganizationAssignmentAssociation, School
Finance Domain	PayrollExt(TX)	Staff	Staff
Finance Domain	ContractedInstructionalStaffFTEExt(TX)	Staff	Staff
Teaching and Learning Domain	Course	No Dependencies for initial, LocalEducationAgency for POST	No Dependencies for initial, LocalEducationAgency for POST
Teaching and Learning Domain	CourseOffering	Session, Course	Session, Course
Teaching and Learning Domain	Section	CourseOffering	CourseOffering
Teaching and Learning Domain	StaffSectionAssociation	Staff, Section (Session, Course, CourseOffering)	Staff, Section (Session, Course, CourseOffering)
Student Identification and Demographics Domain	Student	No Dependencies, StudentSchoolAssociation for subsequent POSTs after initial	Student, StudentSchoolAssociation
Student Identification and Demographics Domain	Parent	No Dependencies	Student, Parent, StudentSchoolAssociation, StudentParentAssociation
Student Identification and Demographics Domain	StudentParentAssociation	Student, Parent	Student, Parent
Student Identification and Demographics Domain	StudentEducationOrganizationAssociation	Student, StudentSchoolAssociation	Student, StudentSchoolAssociation
PriorYearLeaver Domain	PriorYearLeaver(TX)	No Dependencies	No Dependencies
PriorYearLeaver Domain	PriorYearParent(TX)	No Dependencies	No Dependencies
PriorYearLeaver Domain	PriorYearStudentParentAssociation	PriorYearLeaver, PriorYearParent	PriorYearLeaver, PriorYearParent
Enrollment Domain	StudentSchoolAssociation	Student, School	Student, School

# TSDS Domain Dependency (TEDS 2025.2.1)



Domain Name	Entity (Resource) Name	Publishing Data Dependencies	Retrieving Data Dependencies
<b>Enrollment Domain</b>	StudentEducationOrganizationResponsibilityAssociation	Student, StudentSchoolAssociation, LocalEducationAgency	Student, StudentSchoolAssociation, LocalEducationAgency
<b>Student Special Education Program Eligibility Association Domain</b>	StudentSpecialEducationProgramEligibilityAssociation(TX)	Student, Program	Student, Program
<b>Alternative and Supplemental Services Domain</b>	StudentCTEProgramAssociation	Student, Program, School	Student, Program, School
<b>Alternative and Supplemental Services Domain</b>	StudentTitleIPartAProgramAssociation	Student, Program, School	Student, Program, School
<b>Alternative and Supplemental Services Domain</b>	StudentSpecialEducationProgramAssociation	Student, Program, School	Student, Program, School
<b>Alternative and Supplemental Services Domain</b>	StudentLanguageInstructionProgramAssociation	Student, Program, School	Student, Program, School
<b>Assessment Domain</b>	Assessment	No Dependencies	No Dependencies
<b>Assessment Domain</b>	StudentAssessment	Student, Assessment	Student, Assessment
<b>Assessment Domain</b>	ObjectiveAssessment	Assessment	Assessment
<b>Discipline Domain</b>	DisciplineIncident	School	School
<b>Discipline Domain</b>	StudentDisciplineIncidentBehaviorAssociation	Student, DisciplineIncident	Student, DisciplineIncident
<b>Discipline Domain</b>	DisciplineAction	DisciplineIncident, StudentDisciplineIncidentBehaviorAssociation	DisciplineIncident, StudentDisciplineIncidentBehaviorAssociation
<b>Restraint Event Domain Entity</b>	RestraintEvent	Student	Student
<b>Teaching and Learning Domain</b>	Course	No Dependencies for initial, LocalEducationAgency for POST	No Dependencies for initial, LocalEducationAgency for POST

## TSDS Domain Dependency (TEDS 2025.2.1)



Domain Name	Entity (Resource) Name	Publishing Data Dependencies	Retrieving Data Dependencies
Teaching and Learning Domain	CourseOffering	Session, Course	Session, Course
Teaching and Learning Domain	Section	CourseOffering	CourseOffering
Teaching and Learning Domain	StudentSectionAssociation	Student, Section (Session, Course, CourseOffering)	Student, Section (Session, Course, CourseOffering)
Student Academic Record Domain	StudentAcademicRecord	Student, School	Student, School
Student Academic Record Domain	CourseTranscript	StudentAcademicRecord, Courses	StudentAcademicRecord, Courses
Student Attendance Domain	StudentSchoolAttendanceEvent	Student, Session	Student, Session
Student Attendance Domain	StudentProgramAttendanceEvent	Student, Program	Student, Program
Student Attendance Domain	BasicReportingPeriodAttendance (TX)	Student, Calendar	Student, Calendar
Student Attendance Domain	SpecialProgramsReportingPeriodAttendance (TX)	Student, Calendar	Student, Calendar
Student Attendance Domain	SpecialEducationProgramReportingPeriodAttendance (TX)	Student, Calendar	Student, Calendar
Student Attendance Domain	CTEProgramReportingPeriodAttendance (TX)	Student, Calendar	Student, Calendar
Student Attendance Domain	BilingualESLProgramReportingPeriodAttendance (TX)	Student, Calendar	Student, Calendar
Student Attendance Domain	FlexibleRegularProgramReportingPeriodAttendance (TX)	Student, Calendar	Student, Calendar
Student Attendance Domain	FlexibleSpecialEducationProgramReportingPeriodAttendance (TX)	Student, Calendar	Student, Calendar
Student Attendance Domain	FlexibleCTEProgramReportingPeriodAttendance (TX)	Student, Calendar	Student, Calendar
Student Attendance Domain	FlexibleBilingualESLProgramReportingPeriodAttendance (TX)	Student, Calendar	Student, Calendar
Student Attendance Domain	ExtendedSchoolYearServicesAttendance (TX)	Student	Student